

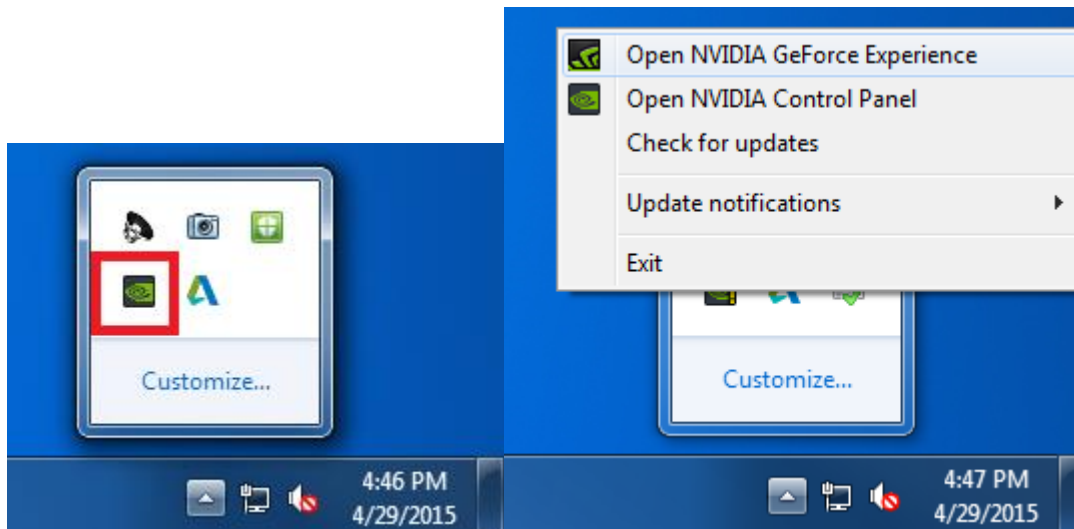
# How to Use Nvidia ShadowPlay

ShadowPlay only works for systems with NVIDIA Series 600 or higher Graphics Cards.

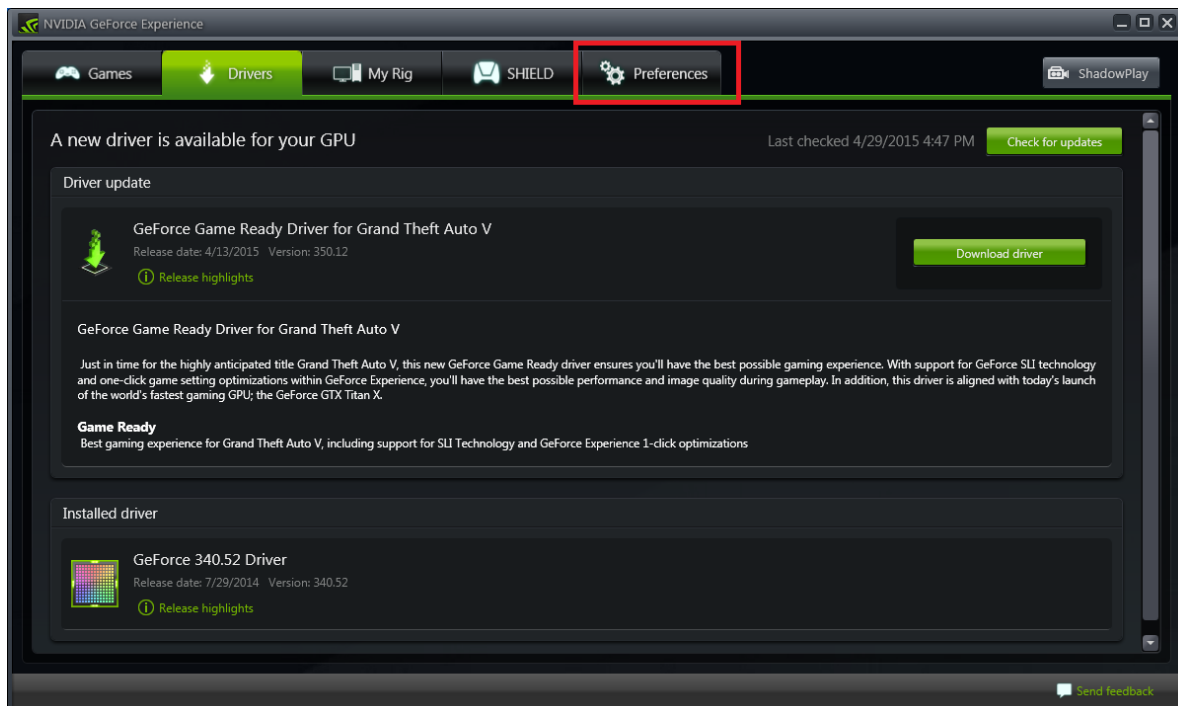
To download this for your own machine, go to <http://www.geforce.com> and download **GeForce Experience**

**All VAST and GSAS PCs already have ShadowPlay installed.**

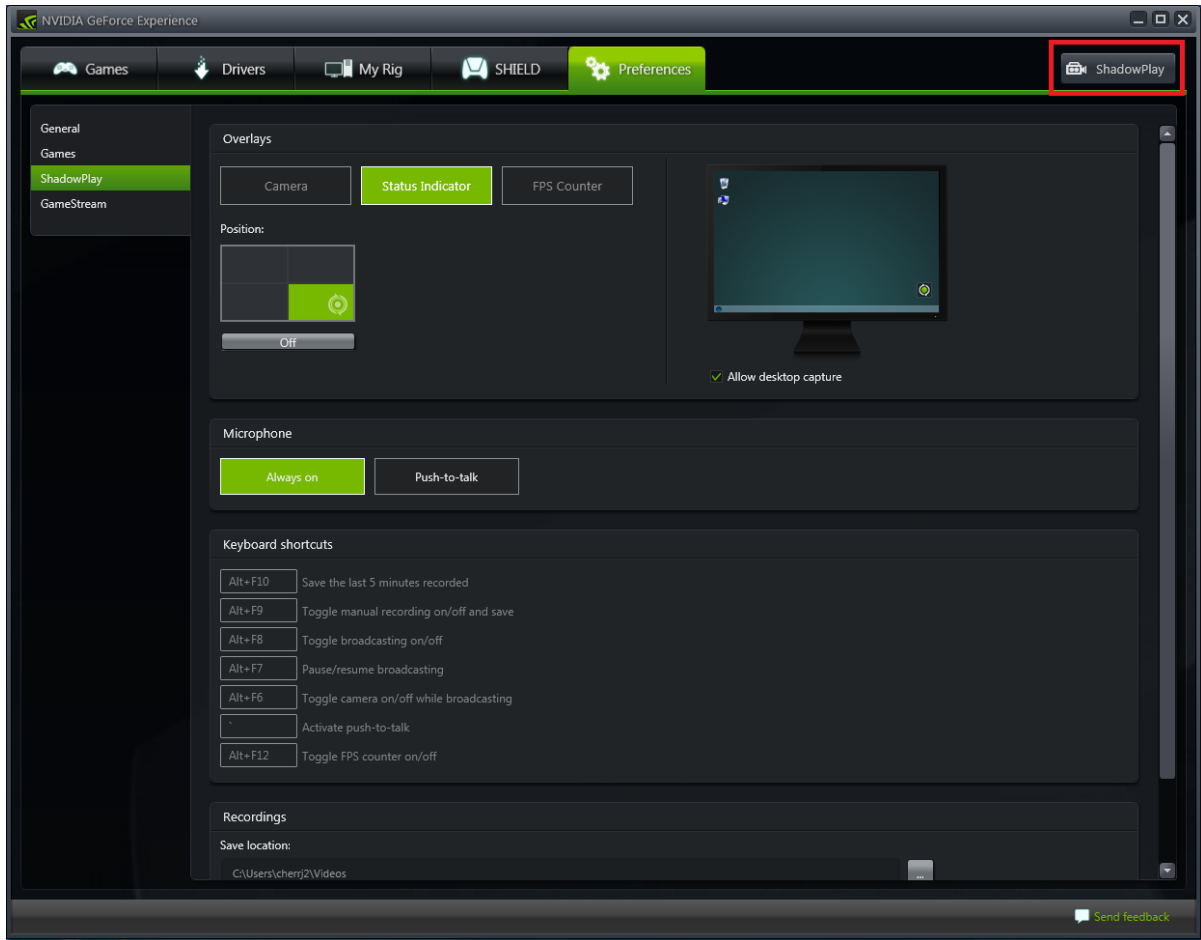
1. Launch GeForce Experience through **All Programs > NVIDIA Corporation > GeForce Experience** or by right-clicking the GeForce icon in your task bar.



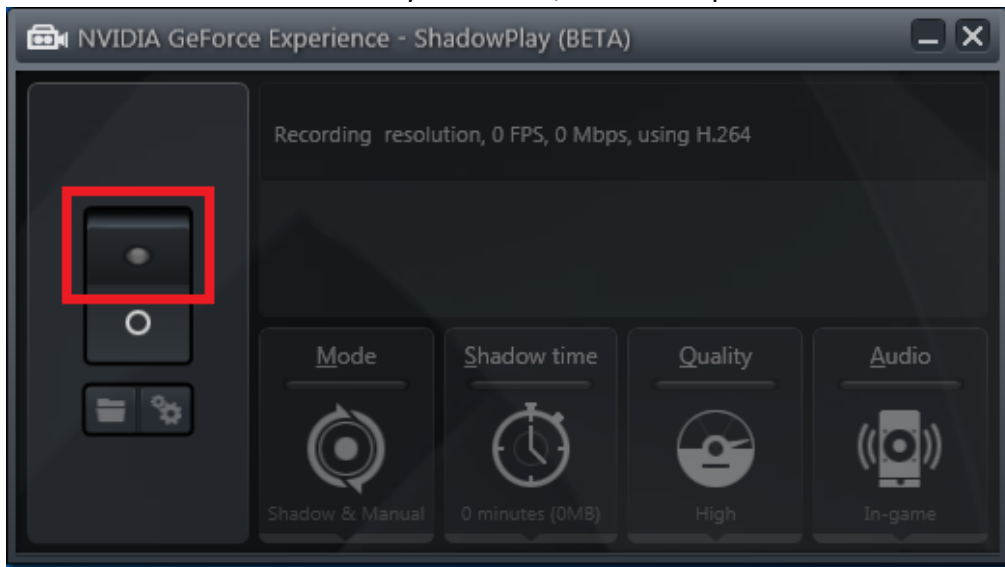
2. NVIDIA GeForce Experience will launch with 5 tabs across the top. Click on the **Preferences** tab. Once in the Preferences menu click on **ShadowPlay** in the left navigation.



3. To turn on ShadowPlay, click on the **ShadowPlay** button in the upper-right corner.

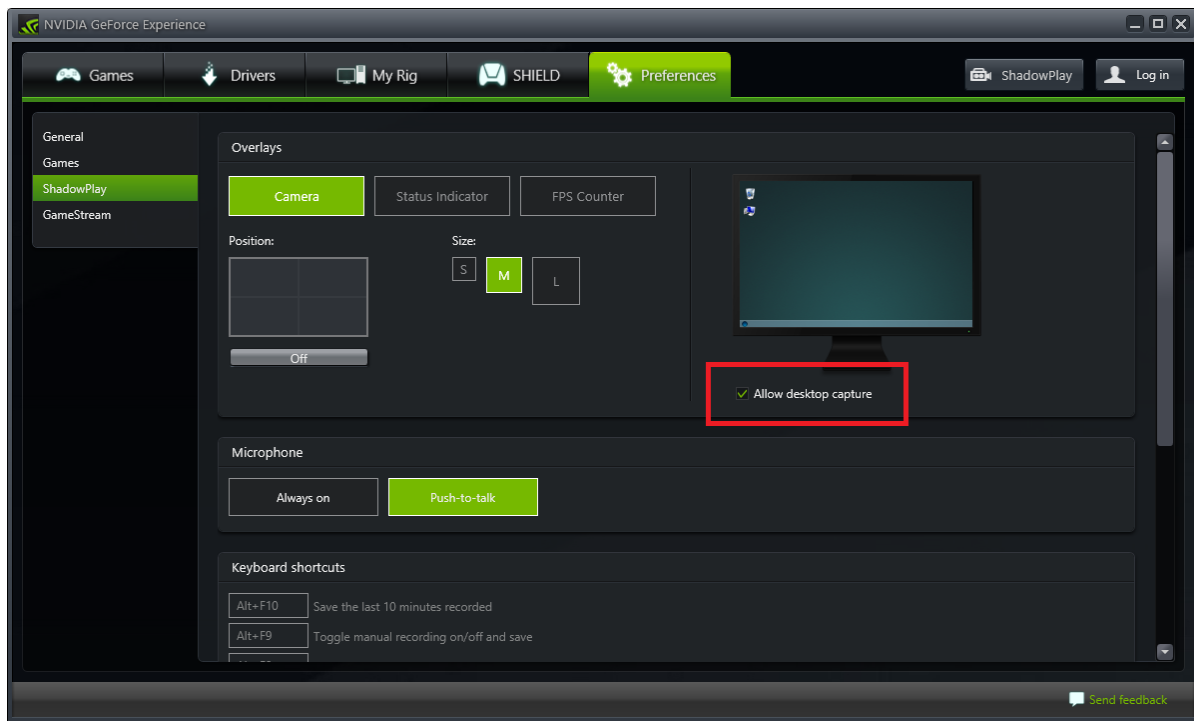


4. This will launch the ShadowPlay controller, click the top of the switch on the left to enable ShadowPlay.





5. Once this is turned on, there is one last setting to change and you will be ready to record. Back on the **Preferences** tab of GeForce Experience, make sure **Allow desktop capture** is checked.



6. Keyboard shortcuts are all listed on the **Preferences** tab, your most important shortcut will be **Alt+F9** (this can be changed). This is the shortcut to start and stop recording. All videos are saved by default in **C:\Users\{username}\Videos\**